



CADOGAN SQUARE, LONDON, SW1X

£18,417

Goldman Greg are delighted to present this bright and spacious apartment, spanning over 2150 sq ft. Located on the raised ground and lower ground floor, the flat has its own entrance and benefits from two large bedrooms with fitted wardrobe space, one en suite bathroom, a separate shower room, a study, a large Reception room, a separate fully fitted kitchen and a guest cloakroom.

This prime location is close to the wide-open spaces of Hyde Park. Both the V&A and the Science Museum are easily accessed as well as Imperial College. Well known Hotels in this area include the Mandarin Oriental, The Berkeley and Jumeirah Carlton Tower. Close to both Knightsbridge underground station (Piccadilly line) and Sloane Square underground station (District and Circle lines).

A selection of fantastic restaurants can be found in this area, including Scalini on Walton Street, Zafferano on Lowndes Street, San Lorenzo on Beauchamp Place and Amaya on Motcomb Street. Good local schools include Francis Holland School, Garden House, Hill House, More House School, Sussex House School and The Knightsbridge School

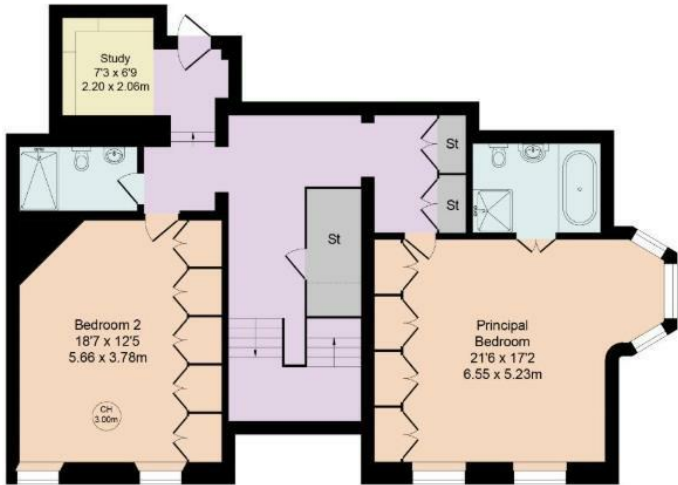


Goldman Greg

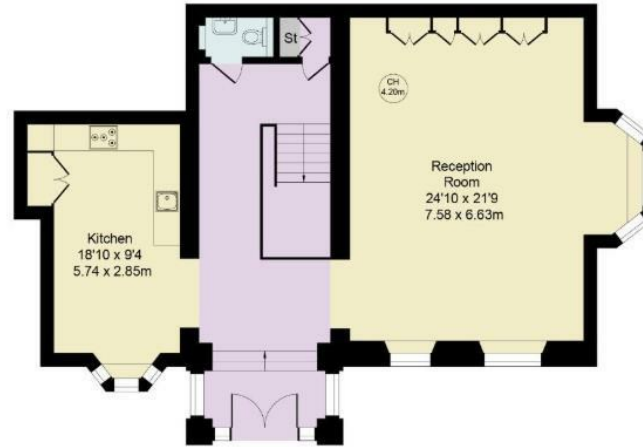
Cadogan Square, SW1X

Approximate Gross Internal Area 2150 sq ft - 199 sq m

Key :
CH - Ceiling Height



Lower Ground Floor



Ground Floor



Energy Efficiency Rating		Current	Potential
Very energy efficient - lower running costs			
(92 plus) A			
(81-91) B			82
(69-80) C			
(55-68) D		57	
(39-54) E			
(21-38) F			
(1-20) G			
Not energy efficient - higher running costs			
England & Wales		EU Directive 2002/91/EC	

Agents Note: Whilst every care has been taken to prepare these particulars, they are for guidance purposes only. All measurements are approximate and are for general guidance purposes only and whilst every care has been taken to ensure their accuracy, they should not be relied upon and potential buyers/tenants are advised to recheck the measurements

Goldman Greg
143 Leaman Street
London
E1 8EY

02079770018
leads@goldmangreg.co.uk
www.goldmangreg.co.uk

